

MercuryMedical®
Your Need . . . Our Innovation®

PRSR STD
U.S. POSTAGE
PAID
Permit #579
St. Petersburg, FL

ONLY ONE



LiteSaver®
Manometer

- Variety of BVM configurations with LiteSaver manometer
- Easy-to-Use **timing light** with Pull Tab for activation
- Blinks every 6 seconds/10 breaths per minute
- Assists in Reduced risk of aspiration
- Assists in Reduced stacking of breaths
- Assists in Reducing risk of hyperventilation
- Assists with improved cardiac output
- Proper ventilation rates have been shown to improve outcomes

a color-coded disposable manometer with integrated timing light for improved adult and pediatric ventilation.

After pulling the red tab, a red light is activated and will blink every six (6) seconds as an indication for the clinician to squeeze the bag and ventilate the patient.
(Time Sequence - 10 breaths per minute)

MercuryMedical®
Your Need . . . Our Innovation®

Patent #US 8,522,618 B1, #US 9,402,781 B2,
#US D 748,773 S Other Patents Pending
www.mercurymed.com

LiteSaver®
Manometer



a color-coded disposable manometer with integrated timing light for improved adult and pediatric ventilation.

Another important development for better patient outcomes.

MercuryMedical®
Your Need . . . Our Innovation®

©Mercury Medical

08/2016

ML2014-300

Rev. B

Free
Sample Offer

LiteSaver®
Manometer



BUSINESS REPLY MAIL

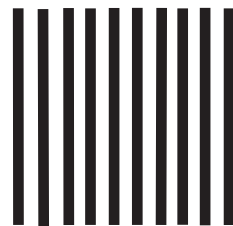
FIRST-CLASS MAIL PERMIT NO. 412 ST. PETERSBURG, FL

POSTAGE WILL BE PAID BY ADDRESSEE

Mercury Medical®
P.O. Box 20000
St. Petersburg, FL 33742-9851

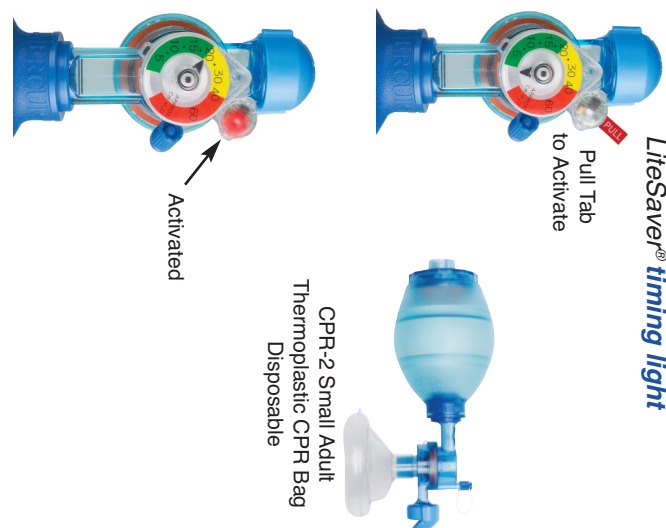


NO POSTAGE
NECESSARY
IF MAILED
IN THE
UNITED STATES



LiteSaver®
Manometer

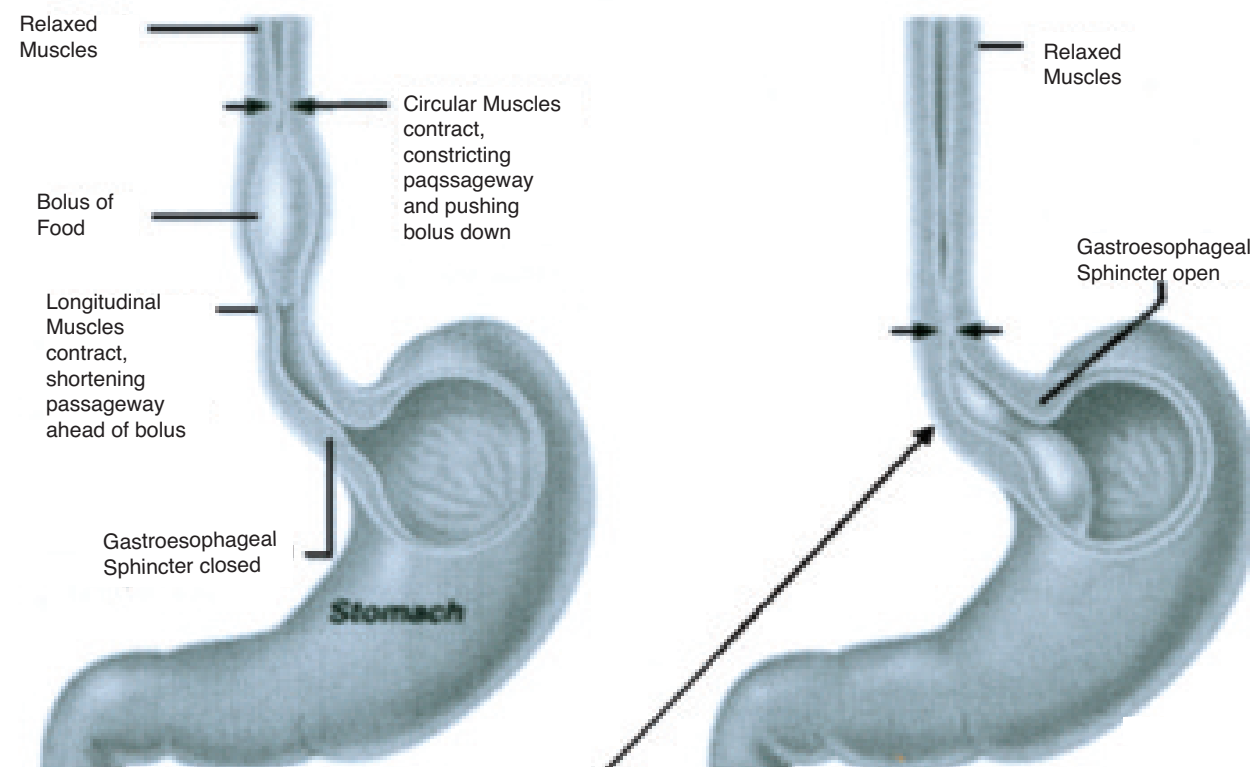
New Disposable
Color-Coded
Manometer
with Integrated
LiteSaver® timing light



CPR-2 Small Adult
Thermoplastic CPR Bag
Disposable

The *LiteSaver* Manometer Advantage

Having a manometer with **timing light** integrated with a BVM (CPR bag) is critical for validating delivered pressures and to help reduce the incidence of aspiration which can occur between 20 - 25 cm H₂O as shown in the following illustration.



Gastroesophageal Sphincter opens at 20 - 25 cm of H₂O, combined with ventilation could cause aspiration.* Using a manometer on an adult bag can help to prevent this occurrence.

Delivering excessive ventilation rates can result in significantly increased intrathoracic pressure and markedly decreased coronary perfusion pressures and survival rates.**



LiteSaver not only provides a time indicator for ventilation, it assists clinicians in delivering a safer, slower ventilation resulting in sufficient expiration time avoiding breath stacking and the risks associated with hyperventilation.

LiteSaver Manometer sequence can be used for adult and pediatric patients in respiratory or cardiac arrest only with an advanced airway - Based on 2015 AHA guidelines.

*A reappraisal of Mouth-to-Mouth Ventilation during bystander-Initiated Cardiopulmonary Resuscitation. Circulation Magazine 1997.
 **Hyperinflation - Induced Hypotension During Cardiopulmonary Resuscitation, Circulation Magazine 2004.

ONLY ONE

LiteSaver Manometer

Disposable Color-Coded Manometer with integrated **timing light** 0-60 cm H₂O

Ordering Information:

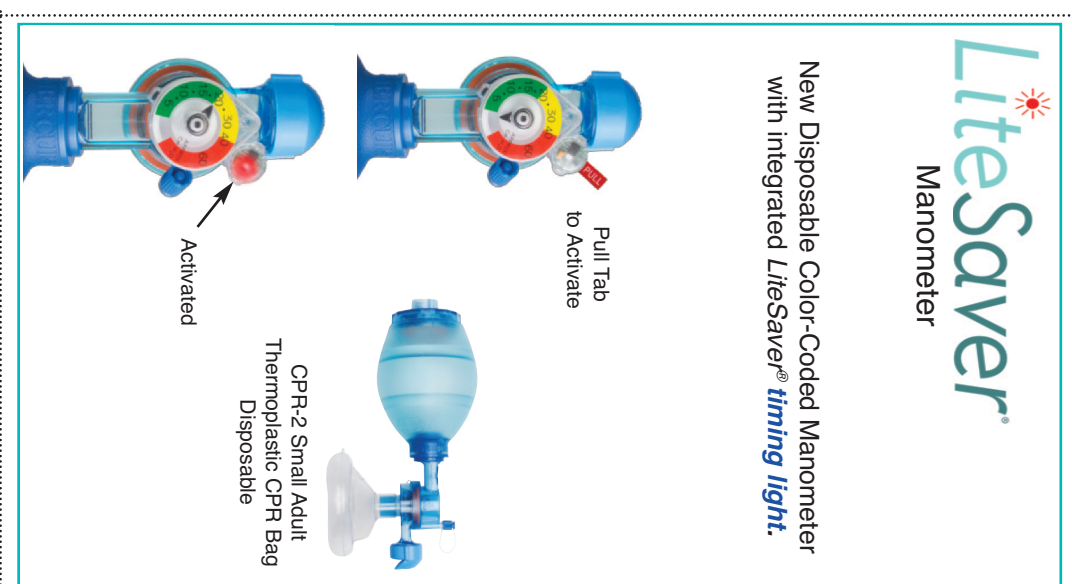
Product #	Adult Bag	Small Adult Bag	Oxygen Bag Reservoir	Aerosol Tubing Reservoir (22mm)	Expandable Large Bore Oxygen Reservoir	Adult Cushion Mask	Small Adult Cushion Mask	Pediatric Cushion Mask	Quadrilite Mask Size #3	PEEP Valve	Pop-Off	Flex-Link	Exhale Bacteria Filter	In-Line Bacteria Filter	Bag Handle (Strap)	StatCO ₂ Detector	LiteSaver Timing Light with 0-60 cmH ₂ O Manometer	
10-58200	X		X								X						X	
10-58201	X			X		X											X	
10-58202	X		X								X				X		X	
10-58203	X		X			X											X	
10-58204	X		X			X				X							X	
10-58205	X		X						X		X						X	
10-58206	X		X			X					X						X	
10-58207	X		X						X								X	
10-58208	X		X						X			X			X		X	
10-58209	X		X			X										X	X	
10-58210	X		X			X							X				X	
10-58500		X	X								X						X	
10-58501		X	X						X			X					X	
10-58502		X	X				X	X			X						X	
10-58503		X	X				X	X			X						X	
10-58000	X		X						X								X	
10-58001	X		X						X			X					X	
10-58002	X		X			X											X	
10-58003	X		X						X			X				X	X	
10-58100	X				X				X								X	
10-58400		X				X											X	
10-55365	Stand Alone Manometer				10-55366 Right Oriented LiteSaver Manometer						10-55367 Left Oriented LiteSaver Manometer							

Legend: = CPR 2 PVC = CPR Thermoplastic Rubber
 Note: Adult - 1,200 ML · Small Adult - 1,000 ML

LiteSaver Specifications: Manometer Range: 0 - 60 cm H ₂ O Variance: ±3 cm H ₂ O up to 15 cm H ₂ O ± 5 cm H ₂ O over 15 cm H ₂ O Port Size: 4.25 mm nominal	Directions for <i>Timing Light</i>: 1. Pull red tab to activate light. 2. <i>Timing Light</i> will appear every six (6) seconds, prompting user to squeeze bag and deliver 10 breaths per minute.
---	--

Integrated <i>Timing Light</i> Specifications: Ventilation Rate: L x W x H (including pull tab) Weight: Light Cadence Time: Brightness of LED: Battery Shelf Life: Storage Temperature: Operating Temperature:	*Approx. 10 breaths per minute 64 mm x 33 mm x 20 mm (2.51 in x 1.29 in x .78 in) 4.3 g 8 hr. 900 Millicandela (MCD) 2 years -20 to 50°C (-4 to 122°F) per battery performance data provided by manufacturer -5 to 40°C (23 to 104°F)
---	--

*Specifications may vary depending on device and test methods.



New Disposable Color-Coded Manometer with integrated *LiteSaver* timing light.

LiteSaver Manometer

The New Disposable Color-Coded Manometer with an integrated *timing light*.

Telephone: (800) 237-6418
 www.mercurymed.com
Mercury Medical
 Your Need . . . Our Innovation®

Please have a representative contact me, I am interested in product samples of the new, disposable *LiteSaver* manometer.
 Please contact me with more information on this innovative new color-coded manometer with *timing light*.

Name: _____ Title: _____
 Dept: _____
 Facility: _____
 Address: _____
 City: _____ State: _____ Zip: _____
 Telephone: _____ e-mail: _____